

# SOCIETY FOR EPIDEMIOLOGIC RESEARCH

## NEWSLETTER 2006

SER, P.O. Box 990 Clearfield, UT 84089

<http://www.epiresearch.org/membership@epiresearch.org/801-525-0231>



## President's Corner

by  
Michael Bracken



It is a pleasure and honor to be your SER President for 2006-2007.

Following a successful Congress in 2006, the SER Executive Committee (EC) is planning a very exciting meeting in Boston (June 19th to 22nd 2007). A bumper crop of symposia submissions was received and we will almost double the number offered for 2007. This will not be at the expense of the traditional spotlight sessions which may also be slightly increased. The theme of the meeting is: *Genome to GIS: how can high technology contribute to modern epidemiology research?* Please check elsewhere in the newsletter for information about submitting abstracts for the meeting. The traditional student workshop, ACE workshops and other meeting highlights will all be offered.

The EC has approved participating in a joint epidemiology policy committee which will be organized through ACE. It has become increasingly obvious in recent years that policies promulgated through the federal Government have a direct bearing on the conduct of epidemiology research. This includes the HIPPA regulations, which have generally had a chilling effect on epidemiologic studies without any documented advantage to study participants, and the newly proposed requirements for genomic research regarding rather rapid public access to an investigator's genomic data. SER members need to have a voice when such policy issues are being considered and the EC believes the most leverage for this will be obtained through the joint policy committee.

The Society has agreed to make a contribution of \$7500 to the Sir Richard Doll fund in recognition of the major contributions of Sir Richard to our

### INSIDE THIS ISSUE

President's Corner	1
Richard Doll Memorial Fund	2
National Policy Effort	3
2006 Awards Winners at Congress of Epidemiology	4
Upcoming Meeting Dates	5
Student Caucus President's Corner	6
Call for Abstracts	7
SER Student Workshop/Lilienfeld Paper	8
Symposia (Preliminary)	9

profession. It is anticipated that this will be a lead contribution with other organizations also participating (see related story in the newsletter).

The EC is undertaking a major review of the SER website so as to make it more accessible to our members and to allow the addition of more material. We hope to launch the new site next year.

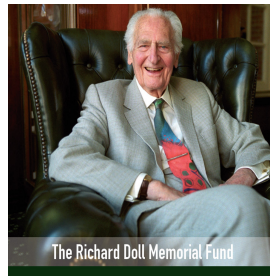
Our Journals continue to steadily improve their impact factor. The *American Journal of Epidemiology* climbed from 3.9 in 2001 to 5.1 in 2005, placing second out of 99 journals in related fields. *Epidemiology Reviews*, with an impact factor of 4.7, ranked fourth.

The Journal increased costs this year, only some of which we are passing on to the membership. The new membership fees are \$150 for regular members and \$85 for student and emeritus members. In response to a request from the SER student caucus, the EC approved a membership fee of \$25 for students not wishing or needing to have the AJE subscription. A larger member discount is planned for the meeting registration.

Finally, the Society archives are missing information on Presidents and Board members, especially during the first 12 years of operation (1968 - 1980). If you have any information about this period please email it to me at: [michael.bracken@yale.edu](mailto:michael.bracken@yale.edu).

## Richard Doll Memorial Fund

Sir Richard Doll who died last July at the age of 92 is widely held to be the most influential Epidemiologist of the second half of the 20<sup>th</sup> century. In recognition of his life and career, Green College at Oxford University, which Doll helped establish and was the first Warden, is planning to build the Richard Doll Quadrangle, with a new academic Center and residential quarters for students.



The Congress 2006 planning committee agreed in principle to contribute to the fund so as to recognize the many contributions Doll made in support of North American epidemiology. SER has made a contribution of \$7500 in anticipation that other organizations will match and hopefully exceed that amount.

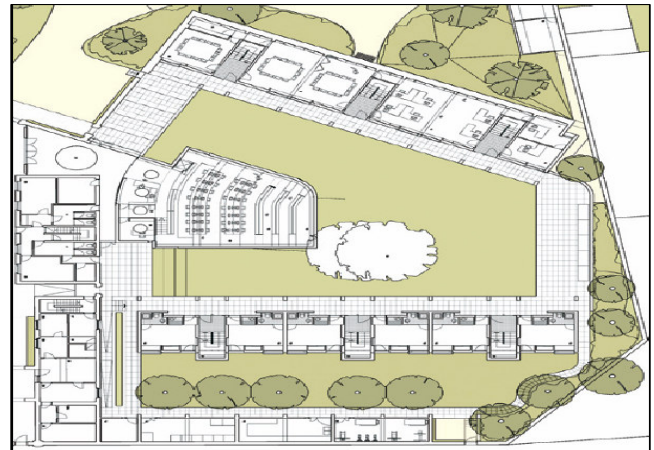
USA members wishing to make individual contributions to the Doll Fund can do so at:

The University of Oxford North American Office  
198 Madison Avenue, 13<sup>th</sup> Floor,  
New York, NY10016  
(Checks payable to: Americans for Oxford Inc.)

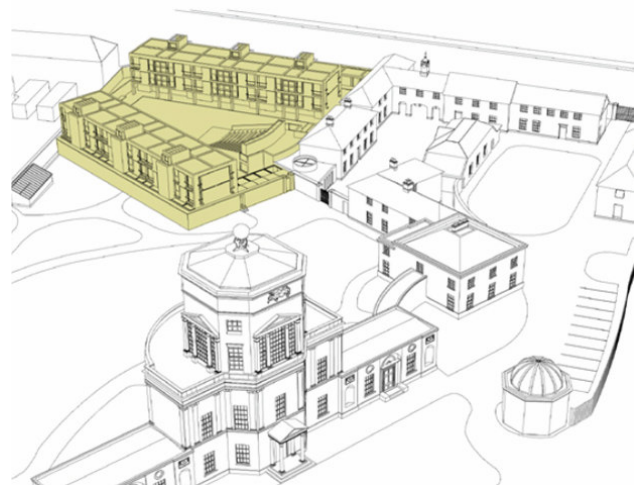
Canadian donors:  
Oxford University Development Office,  
Oxenford House  
Magdalen Street,  
Oxford OX1 3AB, UK  
(Checks payable to: University of Oxford Development Trust)

Rest of the world:  
The Treasurer,  
Green College at the Radcliffe Observatory,  
Woodstock Road,  
Oxford OX2 6HG, UK  
(Checks payable to: Green College (RDMF))

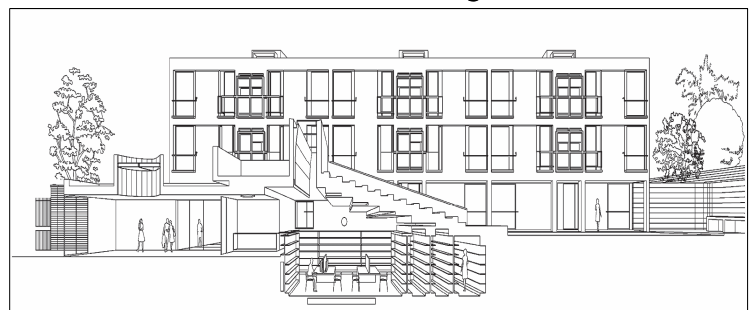
Mark your checks for the Richard Doll Memorial Fund at Green College.



Quadrangle Plan



Residential Wing



Academic Centre

## Influencing policy in a time of change: SER joins national policy effort

Public health research has been responsible for key advances in the prevention of disease, and for promotion of preventive screening that has saved millions of lives over the past century. SER is joining other professional associations in epidemiology and biostatistics to coordinate efforts that will influence policy at the national level. This will be implemented through a policy committee formed by representatives from organizations such as SER and ACE that will involve shared decision making between the parent organizations.

Each participating society will designate and fund a representative to the Joint Policy Committee. Most business will be conducted by conference calls to develop organizational functioning and procedures. These will be sent to parent societies for discussion and potential adoption.

The Joint Policy Committee will take action to influence policy by contacting funding agencies and legislators. Committee members will meet with leaders of funding agencies such as NIH and NAS to communicate the importance of epidemiology and biostatistics to biomedical research and to voice current concerns about the impact of funding policies on the conduct of epidemiologic work. Legislators also need to be made aware of epidemiology and biostatistics' central role in public health research. This can be accomplished by informational campaigns via letter/email as well as policy statements posted on member society websites, and in epidemiology journals.

Our organizations will seek to affiliate with social science researchers who work on health issues and with basic scientists who are open to population-based health research. We share their mission to advocate for policies that promote scientific progress and education and lead to improvements in human health.

The committee will be formed by January, 2007.

*"SER is joining other professional associations in epidemiology and biostatistics to coordinate efforts that will influence policy at the national level."*

## Poster Winners! Congress of Epidemiology 2006 Conference

### Poster Session 1 Winners

Wednesday June 21

1<sup>st</sup> - **Maria-Graciela Holm-Delgado** (127)  
*"Effect of Giardia Intestinalis on Weight Gain In Peruvian Children"*

2<sup>nd</sup> - **Ruth Kleinerman** (116)  
*"Improving Questionnaire-based Assessment of Ultraviolet Radiation from Sunlight: Agreement between Daily Diary and Recalled Time Outdoors 6 Months Later"*

3<sup>rd</sup> - **Melissa Perry** (200)  
*"A Prospective Study of Serum DDT and Progesterone and Estrogen Levels across the Menstrual Cycle in Nulliparous Women of Reproductive Age"*

### Poster Session 2 Winners

Thursday, June 22

1<sup>st</sup> - **Brian Sprague** (379-S)  
*"Lifetime Recreational Physical Activity and Breast Cancer Risk"*

2<sup>nd</sup> - **Dawn Comstock** (538)  
*"Moving Research from Knowledge to Practice"*

3<sup>rd</sup> - **CV Damaraju** (547)  
*"Risk of an Interruption in the Delivery of Pain Medication in the Post-operative Setting with the use of Patient-controlled Analgesia"*

### Poster Session 3 Winners

Friday, June 23

1<sup>st</sup> - **Anne Marie France** (784)  
*"Tuberculosis Trends in Arkansas from 1997 to 2003: A Molecular Epidemiologic Analysis"*

2<sup>nd</sup> - **Hyun Kim** (890)  
*"Alternative Regression Models for Count Data in Public Health Surveillance"*

3<sup>rd</sup> - **Mahasin Mujahid** (L-15)  
*"Neighborhood Walkability and Access to Health Foods are Related to Hypertension in a Multiethnic Sample"*

## Awards for Congress of Epidemiology 2006 Conference



### Student Travel Awards:

All abstracts where the presenter was a student, as marked at time of submission, were considered for a student travel award. This award was based on the quality of the abstract, as judged by scores of two independent, masked, reviewers. Students who submitted one of the top 20 scoring abstracts were awarded \$500. Awards were presented at the Awards Luncheon. Name, abstract number and title are listed below.

**Marie-Jo Brion, #029-S**

“Association between Body Composition and Blood Pressure in a Contemporary Cohort of 9-Year-Old Children”

**Agnes Fournier, #643-S**

“Breast Cancer Risk in Relation to Different Types of Hormone Replacement Therapy: Update of the E3N Results”

**Anne Marie France, #784-S**

“Tuberculosis Trends in Arkansas from 1997 to 2003: A Molecular Epidemiologic Analysis”

**Amanda Kalaydjian, #695-S**

“Are Migraines Protective against Memory Decline? Results from the Baltimore Epidemiologic Catchment Area Study”

**Vijaya Kancherla, # 080-S**

“A Meta-analysis of Prenatal, Perinatal, and Neonatal Risks for Autism”

**Hyun Kim, #890-S**

“Alternative Regression Models for Count Data in Public Health Surveillance”

**Beibei Lu, #289-S**

“An Estimate of Global Female HPV Prevalence: Implications for HPV Vaccine Effectiveness”

**Tom Luben, #623-S**

“Maternal Exposure to Disinfection By-Products and Hypospadias among Infants”

**Matthew McAtee, #237-S**

“Modeling Cortisol Dynamics by Race/Ethnicity and Gender in Response to a Cognitive Testing Challenge”

**Lawrence McCandless, #888-S**

“Bayesian Propensity Score Analysis for Observational Data”

**Donatus Mutasingwa, #188-S**

“Using Healthcare Administrative Data to Identify High Priority Target Groups for Influenza Vaccination”

**Ji Wan Park, #505-S**

“Association between IRF6 and Nonsyndromic Oral Clefts in 4 Populations”

**Lu Peters, #539-S**

“Using Secondary Data and Geo-Spatial Mapping to Identify Unmet Needs within HIV Case Management Services in Rural Pennsylvania”

**Mylene Riva, #239-S**

“From Puzzling Results to Solving the Puzzle: Creating Ecologically Meaningful Spatial Units to Study Area Effects on Health”

**Genesis May Samonte, 774-S**

“A Septicemia-predominant Outbreak of Neisseria Meningitidis Serogroup A in the Philippines (2004-2005)”

**Brian Sprague, 379-S**

“Lifetime Recreational Physical Activity and Breast Cancer Risk”

**Mary Bishop Stone, #301-S**

“Exposure To Radioiodines and Subsequent Fertility: Is There a Problem?”

**Lau Thygesen , #115-S**

“Risk of Colorectal Cancer by Alcohol Intake Status - A Comparison of Approaches for Modeling Repeated Measurements of Intake”

**Abigail Woodroffe, 504-S**

“Genome-Wide Linkage Scan and Follow-up Association Analysis for Schizophrenia in an Afrikaner Founder Population”

*Continued on page 5*

*Continued from page 4*

### 2006 Congress of Epidemiology International Travel Awards:

Scientists from World Bank Developing Countries who presented an abstract at the 2006 Congress of Epidemiology were invited to apply for a 2006 Congress of Epidemiology International Travel Award. The Congress distributed \$2000 for this purpose. Awardees were selected based on a combination of the abstract quality, as judged by scores of two, independent, masked, reviewers, and the budget justification.

**Faiza Ahmed, #390 (Pakistan)**

“Breast Cancer Risk Factor Knowledge and Associated Factors among Nurses in Teaching Hospitals of Karachi, Pakistan”

**Mostafa Arafa, #850 (Egypt)**

“Association of Maternal Work with Adverse Perinatal Outcome”

**Maria-Graciela Hollm-Delgado, #127-S (Peru)**

“Effects of Giardia Intestinalis on Weight Gain in Peruvian Children”

**Jian Liu, #009 (Canada)**

“Non-High-Density-Lipoprotein (Nhdl) and Its Risk Predictive Value in Coronary Heart Disease (CHD)”

**Jerson Muñoz Mendoza, #928-S (Peru)**

“Suicidal Ideation and Family Cohesion in Pre-college Students, Lima-Peru 2005”

**Gul Nowshad, #592-S (Pakistan)**

“Burden and Correlates of Under-nutrition among Married Women in Rural Pakistan”

**Genesis May Samonte, 774-S (Philippines)**

“A Septicemia-predominant Outbreak of Neisseria Meningitides Serogroup A in the Philippines (2004-2005)”

**Jarnail Singh Thakur, #473 (India)**

“An Epidemiological Study of Cancer Reported from Villages of Punjab, India”

*“Future dates for SER and Congress Meetings”*

### Lilienfeld Award:

**Duncan C. Thomas, PhD**, a Professor and Co-Director, of the Biostatistics Division, Keck School of Medicine: **University of Southern California**

### Outstanding Epidemiologist Awards:

**Patricia Hartge, ScD** - Deputy Director, Epidemiology and Biostatistics Program, National Cancer Institute

**Nubia Muñoz, MD, MPH** - Emeritus Scientist, National Cancer Institute of Colombia

### Student Paper Prize Awards:

1<sup>st</sup>/2<sup>nd</sup> - **Alexis Jeannine Handal, PhD, MPH**, “Maternal Occupational Exposure to Pesticides during Pregnancy and Neurobehavioral Development in Ecuadorian Infants and Children in a Flower Growing Region of Ecuador”

1<sup>st</sup>/2<sup>nd</sup> - **Hugo Lopez-Gatell, MD, MSc, PhD**, “Effect of Tuberculosis on the Survival of HIV-infected Women”

3<sup>rd</sup> - **E. Danielle Rentz, MPH**, “Temporal Trends in Child Maltreatment in Military and Non-military Families, 2000-2003”

**SAVE THESE DATES!!!**

**40<sup>th</sup> Annual SER Meeting:  
June 19-22, 2007  
Where: Boston, MA  
Boston Park Plaza Hotel**

### Upcoming Meetings:

2008 - Chicago, IL	(SER)	June 24-27
<i>Hyatt Regency Chicago</i>		
2009 - TBD	(SER)	TBD
2010 - Seattle, WA	(SER)	June 23-26
<i>The Westin Seattle</i>		
2011 - TBD	(Congress)	TBD

## Student Caucus President's Corner by Sara Simonsen



The SER Student Caucus (SER-SC) has been busy this fall with the goals of increasing membership among students and fellows, expanding the benefits of SER-SC membership, and planning activities and workshops for the 2007 SER Annual Meeting in Boston (June 19-22, 2007).

We recently completed an online survey of our List-serve subscribers. The survey was conducted in order to evaluate student programs held at the 2006 Congress of Epidemiology and to get suggestions and ideas for programs for the 2007 meeting. Thanks to everyone who completed the survey!

We are currently working on developing SER-SC programs for the 2007 meeting. If you are interested in helping to plan such activities, please e-mail [kamiller@u.washington.edu](mailto:kamiller@u.washington.edu) or [ramakk@umich.edu](mailto:ramakk@umich.edu).

In response to student feedback, we have decided to offer a \$25 SER membership for students and fellows who do not wish to have access to the American Journal of Epidemiology or who have access to the AJE through their university. We hope that this will make membership more accessible.

We are in the process of recruiting students and fellows to review abstracts submitted for the 2007 meeting. SER-SC abstract reviewers must be student members of SER and must have passed the oral examination for their doctoral degree. For more information, please contact [rthorpe3@jhmi.edu](mailto:rthorpe3@jhmi.edu).

In order to expand student and fellow membership, we are working on updating our list of SER Champions (faculty and staff at schools/programs of public health). If you are a faculty member and are interested in serving as an SER Champion for your institution, please contact [vmalik@hsph.harvard.edu](mailto:vmalik@hsph.harvard.edu). We are also recruiting students and fellows to serve as SER-SC Champions. SER-SC Champions will work

closely with SER Champions to promote SER activities and encourage SER-SC membership and participation. If you are a student or fellow and are interested in serving as an SER-SC champion for your institution, please contact [vmalik@hsph.harvard.edu](mailto:vmalik@hsph.harvard.edu).

We are looking for students or fellows to run for SER-SC office for the 2007-2008 year. This is a good opportunity to get involved with SER and to meet students and faculty from across the country. For more information, please contact [vmalik@hsph.harvard.edu](mailto:vmalik@hsph.harvard.edu).

Our List-serve is used for general announcements, information about SER and SER-SC events, and other epidemiology-related issues. If you are not currently subscribed, information can be found at: [http://hsphsun3.harvard.edu/mailman/listinfo/ser\\_studentcaucus](http://hsphsun3.harvard.edu/mailman/listinfo/ser_studentcaucus).

Information on SER-SC activities and the 2007 SER Meeting can also be found on this website.

The SER-SC Executive Committee Members for 2006-2007 are:

President  
Sara Simonsen, [sara.simonsen@utah.edu](mailto:sara.simonsen@utah.edu)  
University of Utah

Vice President  
Danielle Iuliano, [adi3+@pitt.edu](mailto:adi3+@pitt.edu)  
University of Pittsburgh

Secretary  
Sonia Singh, [ssingh@jhsp.edu](mailto:ssingh@jhsp.edu)  
Johns Hopkins Bloomberg School of Public Health

Treasurer and Abstracts Committee Chair  
Roland Thorpe, Jr., [rthorpe3@jhmi.edu](mailto:rthorpe3@jhmi.edu)  
Johns Hopkins School of Medicine

Membership and Nominations Committee Chair  
Vasanti Malik, [vmalik@hsph.harvard.edu](mailto:vmalik@hsph.harvard.edu)  
Harvard School of Public Health

Annual Meeting Programs Committee Co-Chairs  
Kristin Miller, [kamiller@u.washington.edu](mailto:kamiller@u.washington.edu)  
University of Washington

Karthik Ramakrishnan, [ramakk@umich.edu](mailto:ramakk@umich.edu)  
University of Michigan School of Public Health

Best Regards,  
Sara Simonsen  
SER-SC President

Submission Deadline  
February 2, 2007

## Call for Abstracts for the 40th Annual SER Meeting

June 19(eve), 20-22, 2007 --- Boston, Massachusetts

### Abstract Submission Guidelines

Abstracts are requested for consideration for spotlight and/or poster presentations for the 40<sup>th</sup> Annual SER Meeting in Boston, Massachusetts. Accepted abstracts will be distributed at the June meeting and will also be published in a Supplement issue of the *American Journal of Epidemiology*.

The following rules are AJE policies and must be adhered to precisely:

1. Abstracts are required to be submitted online:

Please use the form located at <http://www.epiresearch.org/abstracts/>. Begin the abstract in the box with a title, a complete list of authors (with presenter noted with an asterisk), and the institution at which the work was done. **EXAMPLE: A Study of Exposure to Disease. I Smith, \*S. Jones, and P. Gold (University, City, State, Zip Code.)** Please leave a space between the heading and the abstract

2. A letter of notification of acceptance or rejection will be emailed to the authors no later than April 30, 2007.
3. **General Rules about the abstracts:**  
Please read these instructions carefully. Do not include figures, tables or mathematical equations in the abstract. **The abstract should not exceed 1935 characters, which includes title and author information.** Avoid acronyms. If you use references, provide the journal, volume, year and page numbers. Spell out abbreviations (including OR or RR) the first time you use them. If you calculate confidence intervals, specify whether they are 90%, 95%, etc. Choose one topic area from the list below. If applicable, also choose a special highlight topic area. These special topic areas will be the focus of this year's spotlight sessions.
4. Presentation of specific data and methodologic details assist reviewers in judging the quality of the research. New findings are of **greater** interest than confirmation of known relations. Clarity and brevity of writing will allow evaluation of the importance of the research. Abstracts are scored by two reviewers. An overall acceptance proportion is applied to each subject area. The allocation of papers therefore represents the number of abstracts submitted for the subject areas. **All abstracts must be received in final form no later than February 2, 2007.**

### General Topic Areas:

- |                        |               |                          |                     |                     |
|------------------------|---------------|--------------------------|---------------------|---------------------|
| •Aging                 | •Behavioral   | •Biomarkers              | •Birth Defects      | •Cancer             |
| •Cardiovascular/Stroke | •Diabetes     | •Environment             | •Ethics             | •Female Cancer      |
| •Genetics/Genomics     | •GIS          | •Health Services         | •HIV/AIDS           | •Infectious Disease |
| •Injury                | •Methods      | •Neuro developmental Epi | •Neuro Epidemiology | •Nutrition          |
| •Occupational          | •Other        | •Pediatrics              | •PharmacoEpi        | •Pregnancy          |
| •Psychiatric           | •Reproductive | •Screening               | •Social             | •Substance Abuse    |
| •Women's Health        |               |                          |                     |                     |

## SER STUDENT WORKSHOP ON EPIDEMIOLOGIC METHODS

SER is accepting applications from students for participation in a one-day workshop on epidemiologic methods related to their research. The workshop will be held on Tuesday, June 19 in Boston, Massachusetts, immediately preceding the SER meeting, June 19-22, 2007. Four faculty members with expertise in epidemiology, biostatistics and various substantive areas will conduct the workshop. Sherman James, PhD, SER President-elect from Duke University will serve as the workshop coordinator. Students selected for participation will receive a fellowship to cover the cost of travel, three days per diem, and the registration fee to the SER meeting. To be eligible, applicants must be currently enrolled in an epidemiology doctoral program. Minority students are particularly encouraged to apply. Applicants should submit a 2 to 3 page paper (not including references, double-spaced on 8.5 x 11 inch paper) describing their project and proposing one or more methodological issues that it raises for discussion at the workshop. One or two pages of tables or figures may accompany the paper. An application form can be downloaded from [www.epiresearch.org/studentwkshp.pdf](http://www.epiresearch.org/studentwkshp.pdf). The application form must be signed by the applicant's academic advisor and attached to the paper as a cover sheet. The project is to be in progress and not already completed so that the workshop may affect how the project is actually conducted. Send to: Julie Buring, ScD, Division of Preventive Medicine, Brigham and Women's Hospital, 900 Commonwealth Ave East - Third floor, Boston, MA 02215.

Contact Dr. Buring for general or submission questions;  
Phone: (617) 278-0863;  
Email: [jburing@rics.bwh.harvard.edu](mailto:jburing@rics.bwh.harvard.edu) .

**Applications must be RECEIVED no later  
than February 15, 2007**

*“An award of \$1,000 plus travel  
expenses to the SER meeting in  
Boston...”*

## LILENFELD STUDENT PRIZE PAPER

An award of \$1,000 plus travel expenses to the SER meeting in Boston will be presented for the best paper submitted describing work done as a student in an advanced degree program with a concentration in epidemiology. The work must have been completed during the two years prior to the June 2007 meeting and must be unpublished at the time of the Annual Meeting. The recipient will be invited to present the research in the Plenary Session in Boston, and the paper will be considered for early publication in the *American Journal of Epidemiology*. Four copies on the paper (in English) must be **RECEIVED** no later than February 2, 2007. Authors should include their telephone number, address and current position, a statement indicating the date the work was completed, their academic advisor's name and signature, and the name of their department chair or head. No prize will be awarded if the review committee decides that none of the manuscripts is of superior quality. Please bring this PRIZE to the attention of potential applicants.

Send papers to:  
Dr. Joseph L. Lyon  
University of Utah  
DFPM - Public Health Program  
375 Chipeta Way Suite A  
Salt Lake City, UT 84108

## CALL FOR REVIEWERS!!!

The unsung heroes of the SER annual meeting are the dozens of experts who volunteer their time to review abstracts. This year's meeting will be held June 19 (eve) - 22, 2007 in Boston, Massachusetts. Each reviewer is asked to rank approximately 25-30 abstracts on topics in their area of expertise. The reviews are done blindly, and two reviewers examine each abstract.

If you are interested and willing to undertake this time sensitive task, please email Jacqueline Brakey (information below) by January 10, 2007. Abstracts will be sent to reviewers the 2nd week in February and will be due back by the last week in February.

You can direct any questions or concerns to:

Jacqueline Brakey  
PH: 801-525-0231  
Fax: 801-774-9211  
Email: [meeting@epiresearch.org](mailto:meeting@epiresearch.org)



## Symposia for 2007 (Preliminary)

The following symposia are proposed for the 40th Annual SER Meeting in Boston, Massachusetts. Titles and organizers are listed below:

Instrumental variables in observational data: can we find them and will they improve causal inference? - *M. Maria Glymour*

Are communities and investigators being served by Community-based participatory research (CBPR)? - *David Goldsmith*

Maternal glucose intolerance and origins of offspring disease - *Adolfo Correa*

Epidemiologists at the Heart of a Crisis: The Safety of Prescription Medicines - *Michele Jara*

Adult reproductive effects of exposure to environmental contaminants - *Julia Wirth*

Benefits and Risks of GIS in Etiologic Research - *Theodore R Holford*

Roles of Mathematical Modeling in Epidemiologic Study: Current Status and Future Direction - *Ximin Lin*

21 years of silent revolution: Robins's g-formula - *Miguel Hernan*

Analysis of outcomes from multiple sources - *Constantine Daskalakis*

Intermediate Markers in Breast Cancer: Surrogates or Subterfuge? - *Amy Trentham-Dietz*

Overcoming methodological challenges in identifying causes of birth defects - *Margaret (Peggy) Honein*

Design and Analysis of Longitudinal Studies in Epidemiologic Research - *Donna Spiegelman*

The relationship between child and adult exposure to interpersonal violence and subsequent physical and psychological health - *Lise Fried*

Recent Innovations in Biologic Sample Collection in Large Scale Studies - *Eugenia Calle*

Neighborhood environment and older adults: Conceptual and methodological issues - *Yvonne Michael*

Uncertainty in Reconstructed Doses Influences Statistical Power and the Slope and Confidence Interval of the Epidemiological Dose Response - *F Owen Hoffman*

Race/Ethnicity, Social Context, and Schizophrenia - *Ezra Susser*

**President**, Michael Bracken, PhD, MPH  
Yale School of Public Health  
60 College Street  
P.O. Box 208034  
New Haven, CT 06520-8034  
Phone: (203) 764-9375  
Fax: (203) 764-9378  
E-mail: [michael.bracken@yale.edu](mailto:michael.bracken@yale.edu)

**President-Elect**, Sherman A. James, PhD  
Duke University  
194 Rubenstein Hall  
Durham, NC 27708-90312  
Phone: (919) 613-9257  
Fax: (919) 684-6246  
E-mail: [sjames@duke.edu](mailto:sjames@duke.edu)

**Past - President**, Irva Hertz-Picciotto, PhD  
UC Davis/Department of EPM, TB #168  
Davis, CA 95616  
Phone: (530) 752-3025  
Fax: (530) 752-3239  
E-mail: [ihp@ucdavis.edu](mailto:ihp@ucdavis.edu)

**Secretary-Treasurer**, Joseph L. Lyon, MD, MPH  
University of Utah School of Medicine/DFPM  
375 Chipeta Way, Suite A  
Salt Lake City, UT 84108  
Phone: (801) 587-3350  
Fax: (801) 587-3353  
E-mail: [joseph.lyon@utah.edu](mailto:joseph.lyon@utah.edu)

**Board Member**, Mary N. Haan, PhD, MPH  
University of Michigan SPH  
Epidemiology  
611 Church St., Room 311  
Ann Arbor, MI 48104  
Phone: (734) 615-9606  
E-mail: [mnhaan@umich.edu](mailto:mnhaan@umich.edu)

**Board Member**, Noel Weiss, MD, PhD, MPH  
University of Washington  
Box 357236  
1959 NE Pacific St., Room F263  
Seattle, WA 98195  
Phone: (206) 685-1788  
E-mail: [nweiss@u.washington.edu](mailto:nweiss@u.washington.edu)

**Board Member**, Donna Spiegelman, ScD  
Harvard SPH - Department of Epidemiology  
Kresge Building, Room 806  
677 Huntington Avenue  
Boston, MA 02115  
Phone: (617) 432-0205  
E-mail: [stdls@chaning.harvard.edu](mailto:stdls@chaning.harvard.edu)

**Board Member**, Sandro Galea, MD, PhD  
University of Michigan, School of Public Health  
Department of Epidemiology  
1214 South University, Room 243  
Ann Arbor, MI 48104-2548  
Phone: (734) 647-9741  
Fax: (734) 998-0006  
E-mail: [sgalea@umich.edu](mailto:sgalea@umich.edu)

**Student Caucus President**, Sara Simonsen, RN, MSPH  
University of Utah - Public Health Program  
375 Chipeta Way, Suite A  
Salt Lake City, UT 84108  
Phone: (801) 587-3323  
Fax: (801) 587-3353  
Email: [sara.simonsen@utah.edu](mailto:sara.simonsen@utah.edu)

**Meeting Manager**, Peggy Christensen, CMP  
University of Utah - Public Health Program  
375 Chipeta Way, Suite A  
Salt Lake City, UT 84108  
Phone: (801) 585-6808  
Fax: (801) 587-3353  
E-mail: [peggy.christensen@utah.edu](mailto:peggy.christensen@utah.edu)

**Administrative Manager**, Terry Sniff  
University of Utah - Public Health Program  
375 Chipeta Way, Suite A  
Salt Lake City, UT 84108  
Phone: (801) 587-9120  
Fax: (801) 587-3353  
E-mail: [terry.sniff@utah.edu](mailto:terry.sniff@utah.edu)

**SER Member Relations**, Jacqueline Brakey  
PO Box 990  
Clearfield, UT 84089  
Phone: (801) 525-0231  
Fax: (801) 774-9211  
E-mail: [membership@epiresearch.org](mailto:membership@epiresearch.org)



**Society for Epidemiologic Research**

P.O. Box 990  
Clearfield, UT 84089

**Phone:**  
(801) 525-0231

**Fax:**  
(801) 774-9211

**E-Mail:**  
[membership@epiresearch.org](mailto:membership@epiresearch.org)

---

*We're on the Web!*

*Visit us at:*  
<http://www.epiresearch.org>

---

Society for Epidemiologic Research

P.O. Box 990  
Clearfield, UT 84089

